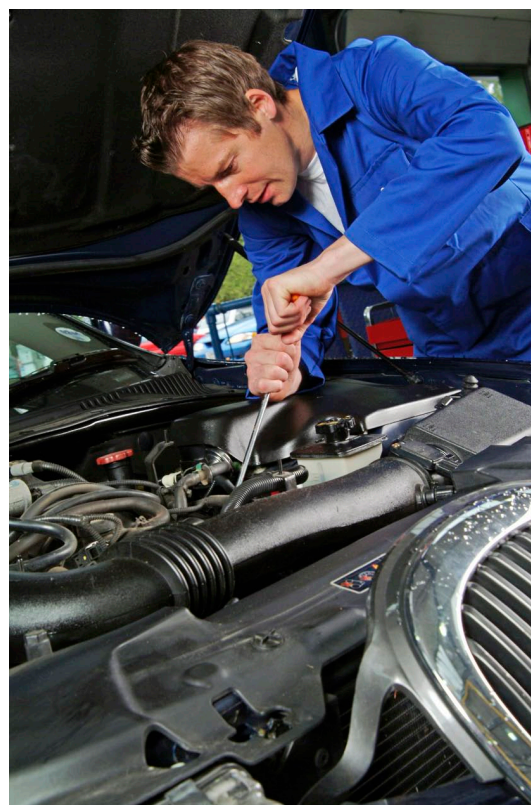
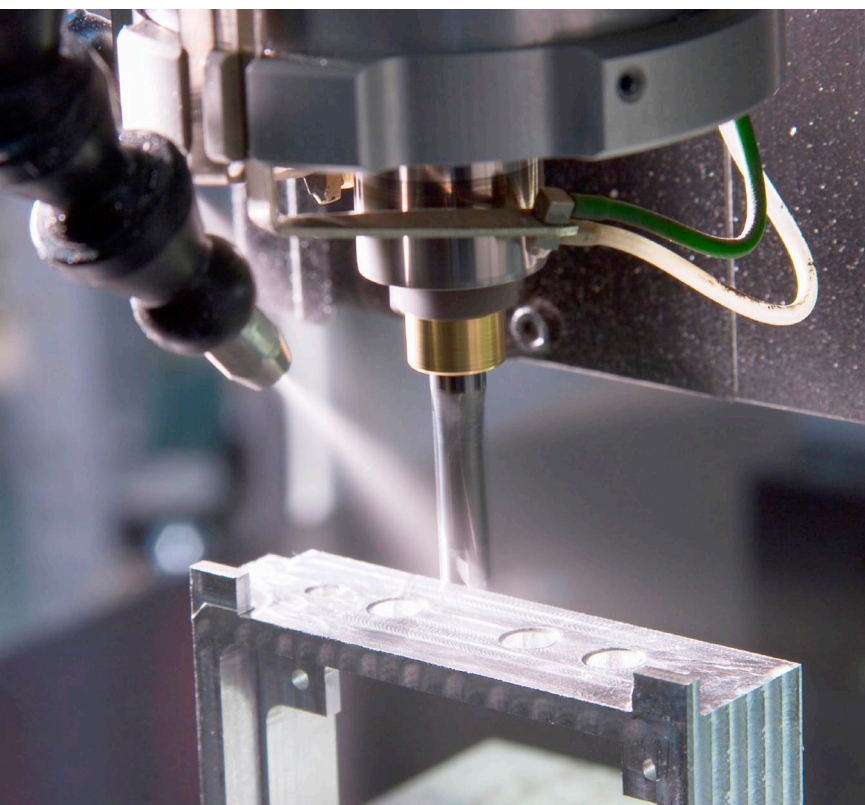
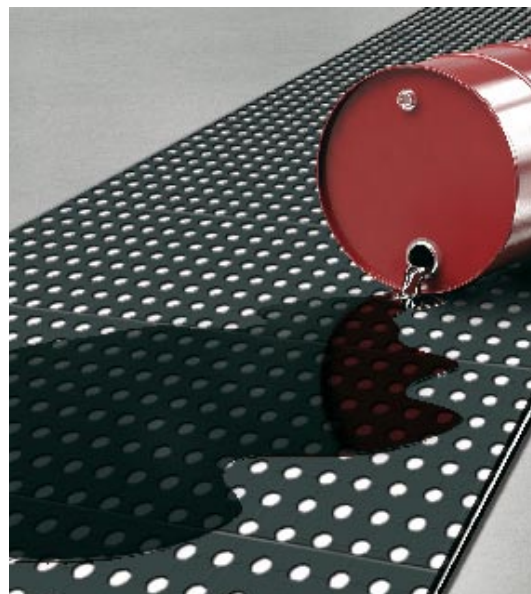


ergolastec oil

THE MAT, RESISTANT TO OIL, GREASE
AND GASOLINE



ergolastec oil

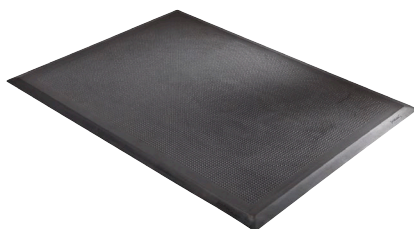
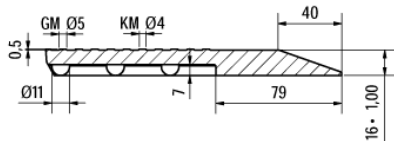
THE MAT, RESISTANT TO OIL, GREASE AND GASOLINE

basic data	oil_dry	oil_wet	oil_diamond	oil_drain
Upper surface	flat structure	bubble-top	diamond structure	bubble-top with drains
Bottom side	shock-absorbing bubbles	shock-absorbing bubbles	shock-absorbing bubbles	shock-absorbing bubbles
Outer edge	20° bevelled	20° bevelled	20° bevelled	20° bevelled
Lenght/width/thickness	1350 x 1000 x 16 mm*	1350 x 1000 x 20 mm*	1350 x 1000 x 20 mm*	1350 x 1000 x 19 mm*
Weight	19 ± 1 kg	19,5 ± 1 kg	19,5 ± 1 kg	18 ± 1 kg
Hardness	55 ± 4 Shore A	55 ± 4 Shore A	55 ± 4 Shore A	55 ± 4 Shore A
Temperatur resistance	- 35°C to + 95°C	- 35°C to + 95°C	- 35°C to + 95°C	- 35°C bis + 95°C
Interlocking designs	Typ A to K	Typ A to K	Typ A to K	Typ A to K
Material	Rubber SBR-based	Rubber SBR-based	Rubber SBR-based	Rubber SBR-based
Colour	black	black	black	black
Tear resistance	> 6,0 MPa	> 6,0 MPa	> 6,0 MPa	> 6,0 MPa
Elongation at break	> 550 %	> 550 %	> 550 %	> 550 %
Density	1,3 ± 0,2 g / cm ³	1,3 ± 0,2 g / cm ³	1,3 ± 0,2 g / cm ³	1,3 ± 0,2 g / cm ³
Fire protection certivikation	Cfl-s2**	Cfl-s2**	Cfl-s2**	Cfl-s2**
Oil resistance	resistant to mineralic oils and commercial cleaning agents at use according to the product instructions			

- ERGOLASTEC oil is resistant to oil, grease and gasoline
- The mat for all high-footfall areas and stand-up workstations
- ERGOLASTEC oil front of workbenches, assembly benches, production lines, turning and milling machines, eg.
- Bevelled outside edges for reduced risk of stumbling
- Very firm and sturdy making it suitable as a base when using transportation equipment
- This mat is due to the choice of high quality material comparatively odour less and therefore good applicable at indoor- areas
- Cleaning of mat and floor facilitated by simple removal of mat
- Further information for application and handling you will find in our manual under www.ergolastec.com/Download

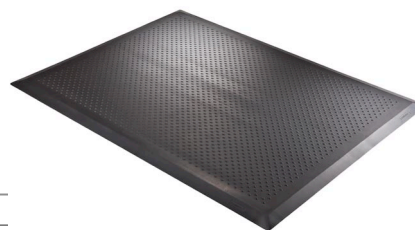
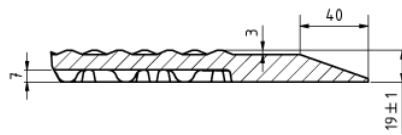
* Tolerances according to DIN ISO 3302-1M4
 ** According EN 13501

ergolastec oil_dry



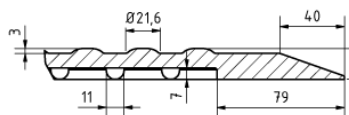
Mat with flat structure for dry workstations

ergolastec oil_diamond



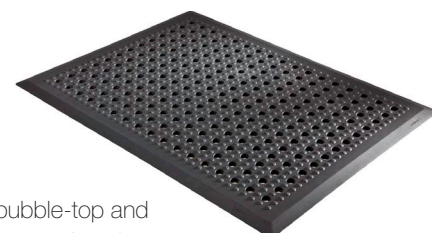
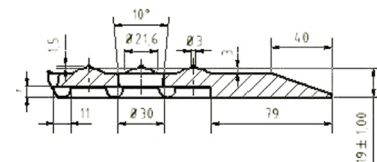
Mat with diamond structure for workstations with increased slip danger

ergolastec oil_wet



Mat with bubble-top for damp workstations

ergolastec oil_drain



Mat with bubble-top and drains for wet workstations