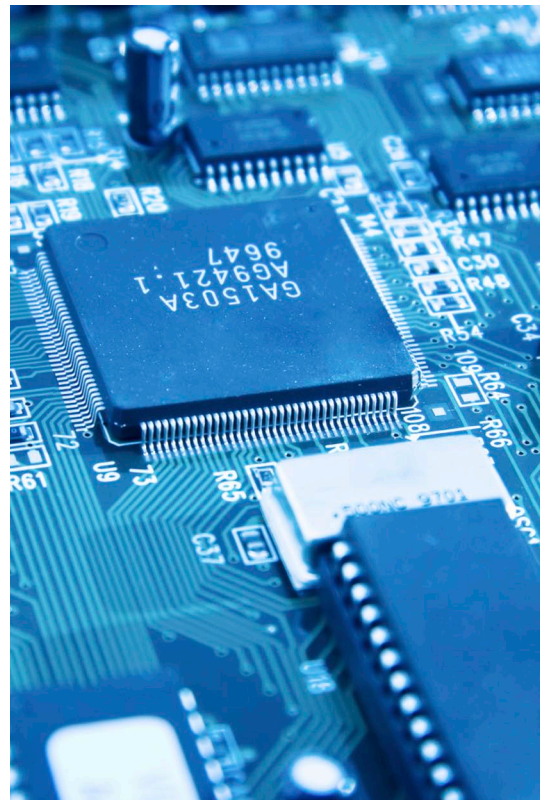
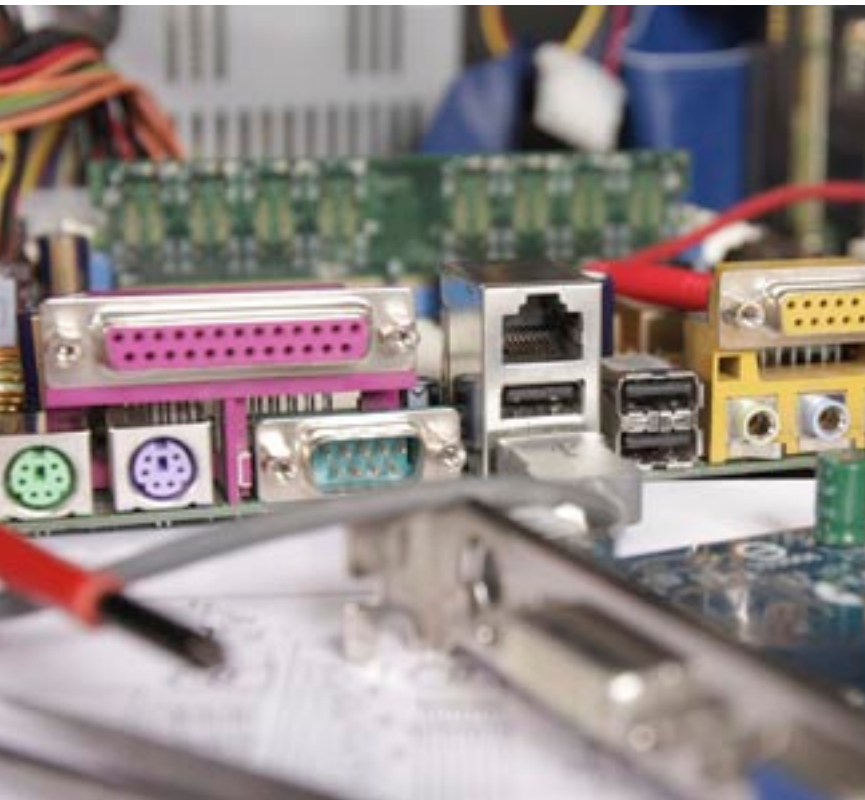
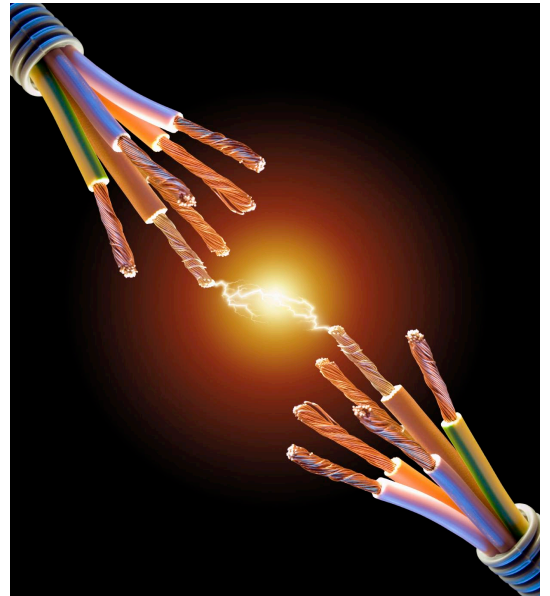


ergolastec esd

THE ELECTRICALLY CONDUCTIVE INDUSTRIAL MAT



ergolastec esd

THE ELECTRICALLY CONDUCTIVE INDUSTRIAL MAT

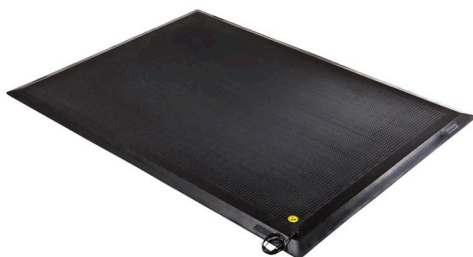
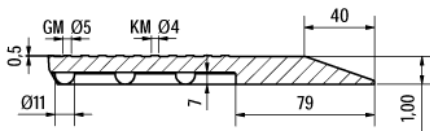
basic data	esd_dry	esd_wet	esd_diamond
Upper surface	flat structure	bubble-top	diamond structure
Bottom side	shock-absorbing bubbles	shock-absorbing bubbles	shock-absorbing bubbles
Outer edge	20° bevelled	20° bevelled	20° bevelled
Lenght/width/thickness	1350 x 1000 x 16 mm*	1350 x 1000 x 20 mm*	1350 x 1000 x 20 mm*
Weight	19 ± 1 kg	19,5 ± 1 kg	19,5 ± 1 kg
Hardness	55 ± 4 Shore A	55 ± 4 Shore A	55 ± 4 Shore A
Temperatur resistance	- 35°C to + 95°C	- 35°C to + 95°C	- 35°C to + 95°C
Interlocking designs	Typ A to K	Typ A to K	Typ A to K
Material	Rubber SBR-based	Rubber SBR-based	Rubber SBR-based
Colour	black	black	black
Tear resistance	> 7,0 MPa	> 7,0 MPa	> 4,0 MPa
Elongation at break	> 500 %	> 500 %	> 300 %
Density	1,2 ± 0,2 g / cm ³	1,2 ± 0,2 g / cm ³	1,3 ± 0,2 g / cm ³
Fire protection certivikation	equivalent to Dfl	equivalent to Dfl	equivalent to Dfl
Electrical conductivity	electroconductive	electroconductive	electroconductive
Vertical resistance	≤ 10 ⁵ Ω (Ohm)**	≤ 10 ⁵ Ω (Ohm)**	≤ 10 ⁵ Ω (Ohm)**

* Tolerances according to DIN ISO 3302-1M4

** According DIN EN 1081

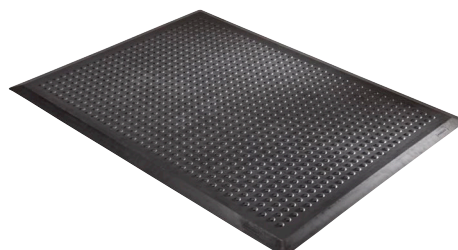
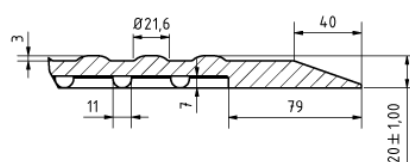
- ERGOLASTEC esd for sensitive electronic workstations or workstations in areas subject to explosion hazards
- The contact resistance of this special mat is conductive according to spec. EN 61340-4-1
- Bevelled outside edges for reduced risk of stumbling
- Very firm and sturdy making it suitable as a base when using transportation equipment
- This mat is due to the choice of high quality material comperatively odour less and therefore good applicable at indoor-areas
- Cleaning of mat and floor facilitated by simple removal of mat
- Further information for application and handling you will find in our manuel under www.ergolastec.com/Download

ergolastec esd_dry



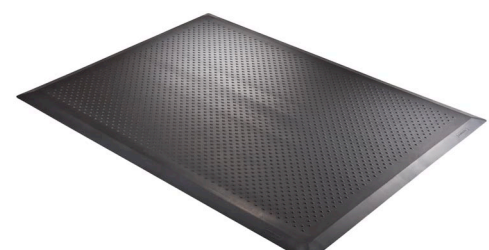
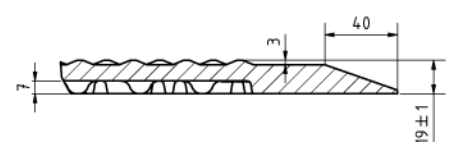
Mat with flat structure for dry workstations

ergolastec esd_wet



Mat with bubble-top for damp workstations

ergolastec esd_diamond



Mat with diamond structure for workstations with increased slip danger