

ergolastec clean

THE HYGIENIC MAT



ergolastec clean

THE HYGIENIC MAT

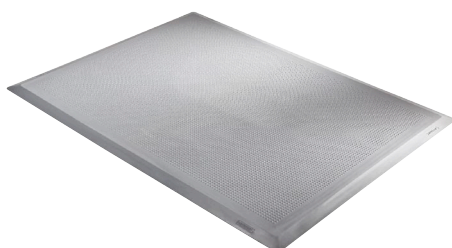
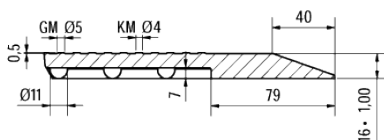
| basic data | clean_dry | clean_wet | clean_drain |
|-------------------------------|----------------------------------|----------------------|------------------------|
| Upper surface | flat structure | bubble-top | bubble-top with drains |
| Bottom side | dämping hemisphere | dämping hemisphere | dämping hemisphere |
| Outer edge | 20° bevelled | 20° bevelled | 20° bevelled |
| Lenght/width/thickness | 1350 x 1000 x 16 mm* | 1350 x 1000 x 20 mm* | 1350 x 1000 x 19 mm* |
| Weight | 19 ± 1 kg | 19,5 ± 1 kg | 18 ± 1 kg |
| Hardness | 63 ± 4 Shore A | 63 ± 4 Shore A | 63 ± 4 Shore A |
| Temperatur resistance | - 35°C to + 95°C | - 35°C to + 95°C | - 35°C to + 95°C |
| Interlocking designs | Typ A to K | Typ A to K | Typ A to K |
| Material | EPDM | EPDM | EPDM |
| Colour | grey | grey | grey |
| Tear resistance | ≥ 6 MPa | ≥ 6 MPa | ≥ 6 MPa |
| Elongation at break | ≥ 500 % | ≥ 500 % | ≥ 500 % |
| Density | 1,2 ± 0,2 g/cm³ | 1,2 ± 0,2 g/cm³ | 1,2 ± 0,2 g/cm³ |
| Fire protection certivikation | equivalent to Dfl | equivalent to Dfl | equivalent to Dfl |
| Biocide properties | resistant to fungus and bacteria | | |

*Tolerances according to DIN ISO 3302-1M4;

- Its biocidal finish makes it particularly suitable for use in hygiene-sensitive areas such as canteen kitchens, butcher's shops and abattoirs
- ERGOLASTEC clean provides high skid-resistant even on soiled surfaces
- Bevelled outside edges for reduced risk of stumbling
- Mat stays in place on the floor, its own weight preventing it from slipping when laid loosely in isolation
- Very firm and sturdy making it suitable as a base when using transportation equipment
- Available in attractive grey tone
- ERGOLASTEC clean is made of biocidal rubber-compound according to the hygenic specifications and prevent from bacterium- and fungal-formation
- This mat is due to the choce of high quality material comperatively odour less and therefore good applicable at indoor- areas
- Cleaning of mat and floor facilitated by simple removal of mat
- Further information for application and handling you will find in our practice handbook under www.ergolastec.com/Download

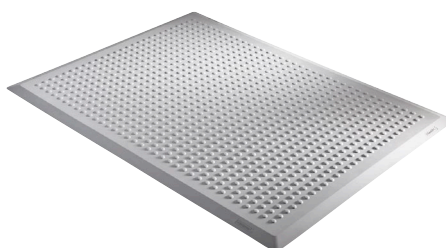
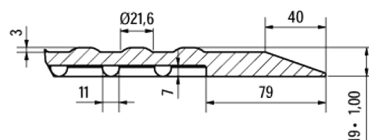


ergolastec clean_dry



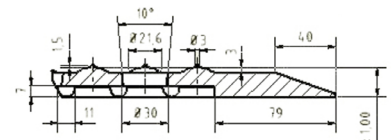
Mat with flat structure for dry workstations

ergolastec clean_wet



Mat with bubble-top for damp workstations

ergolastec clean_drain



Mat with bubble-top and drains for wet workstations