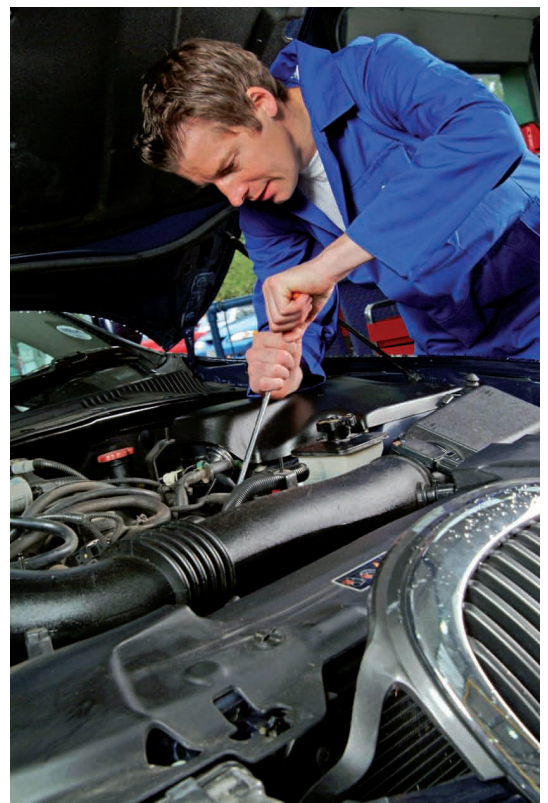
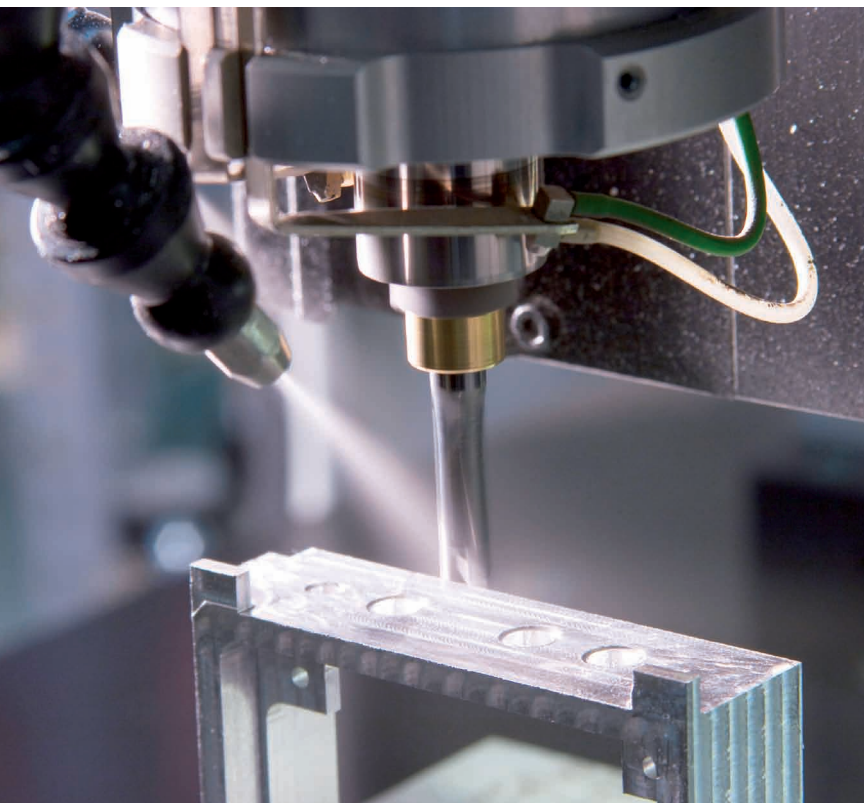
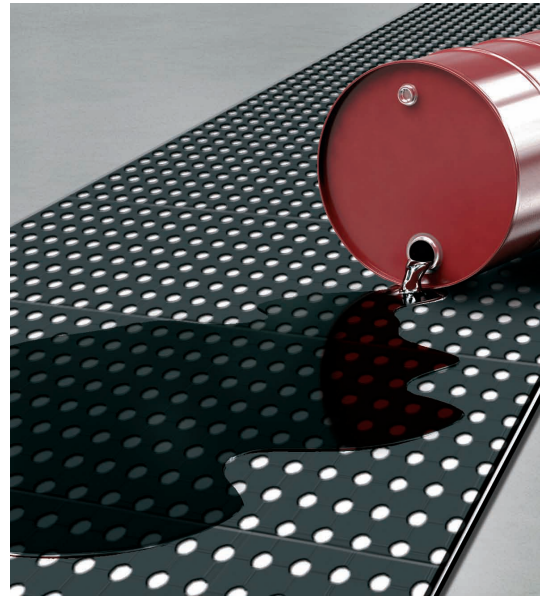


ergolastec oil

THE MAT, RESISTANT TO OIL, GREASE
AND GASOLINE



ergolastec oil

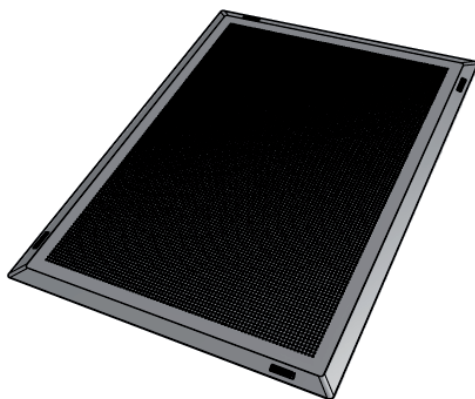
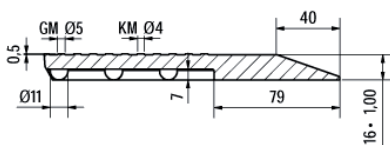
THE MAT, RESISTANT TO OIL, GREASE AND GASOLINE

basic data	oil_dry	oil_wet	oil_drain
Upper surface	flat structure	bubble-top	bubble-top with drains
Bottom side	dämping hemisphere	dämping hemisphere	dämping hemisphere
Outer edge	20° bevelled	20° bevelled	20° bevelled
Lenght/width/thickness	1350 x 1000 x 16 mm*	1350 x 1000 x 19 mm*	1350 x 1000 x 19 mm*
Weight	17,5 ± 1 kg	18 ± 1 kg	16,5 ± 1 kg
Hardness	60 ± 5 Shore A	60 ± 5 Shore A	60 ± 5 Shore A
Temperatur resistance	- 35°C to + 95°C	- 35°C to + 95°C	- 35°C to + 95°C
Interlocking designs	Typ A to K	Typ A to K	Typ A to K
Material	NBR-Rubber	NBR-Rubber	NBR-Rubber
Colour	black	black	black
Tear resistance	min. 4,0 MPa	min. 4,0 MPa	min. 4,0 MPa
Elongation at break	> 200 %	> 200 %	> 200 %
Density	1,242 ± 0,2 g / cm³	1,242 ± 0,2 g / cm³	1,242 ± 0,2 g / cm³
Fire protection certification	equivalent to Dfl	equivalent to Dfl	equivalent to Dfl
Oil resistance	resistant to mineralic oils and commercial cleaning agents at use according to the product instructions		

- ERGOLASTEC oil is resistant to oil, grease and gasoline
- The mat for all high-footfall areas and stand-up workstations
- ERGOLASTEC oil front of workbenches, assembly benches, production lines, turning and milling machines, eg.
- Bevelled outside edges for reduced risk of stumbling
- Very firm and sturdy making it suitable as a base when using transportation equipment
- This mat is due to the choice of high quality material comparatively odour less and therefore good applicable at indoor- areas
- Cleaning of mat and floor facilitated by simple removal of mat

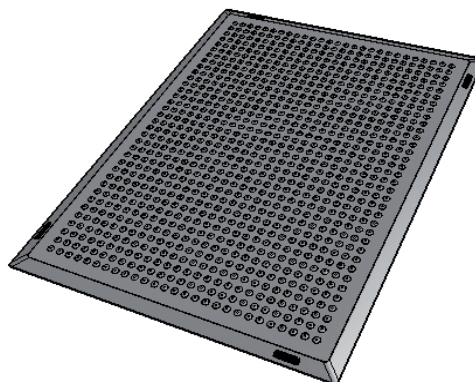
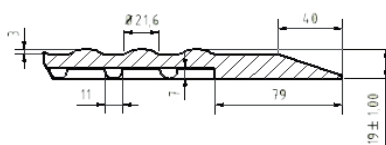
*Tolerances according to DIN ISO 3302-1M3

ergolastec oil_dry



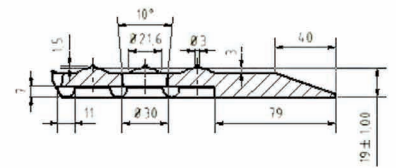
Mat with flat structure for dry workstations

ergolastec oil_wet



Mat with bubble-top for damp workstations

ergolastec oil_drain



Mat with bubble-top and drains for wet workstations