

ergolastec fire

THE FLAME-RETARDANT MAT



ergolastec fire

THE FLAME-RETARDANT MAT

basic data	fire_wet	fire_dry
Upper surface	bubble-top	flat structure
Bottom side	dämping hemisphere	dämping hemisphere
Outer edge	20° bevelled	20° bevelled
Lenght/width/thickness	1350 x 1000 x 19 mm***	1350 x 1000 x 16 mm***
Weight	18 ± 1 kg	17,5 ± 1 kg
Hardness	63 ± 4 Shore A	63 ± 4 Shore A
Temperatur resistance	- 35°C to + 95°C	- 35°C to + 95°C
Interlocking designs	Typ A to K	Typ A to K
Material	Rubber SBR-based	Rubber SBR-based
Colour	black	black
Tear resistance	> 4,0 MPa	> 4,0 MPa
Elongation at break	> 150 %	> 150 %
Density	1,3 ± 0,2 g / cm ³	1,3 ± 0,2 g / cm ³
Fire protection certivikation	Cfl-s1*	Cfl-s1*
Electrical conductivity	electroconductive	electroconductive
Vertical resistance	≤ 10 ⁶ Ω (Ohm)**	≤ 10 ⁶ Ω (Ohm)**

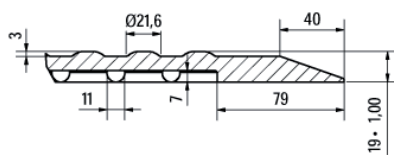
* According DIN EN 13501-1

** According DIN EN 1081

*** Tolerances according to DIN ISO 3302-1M3

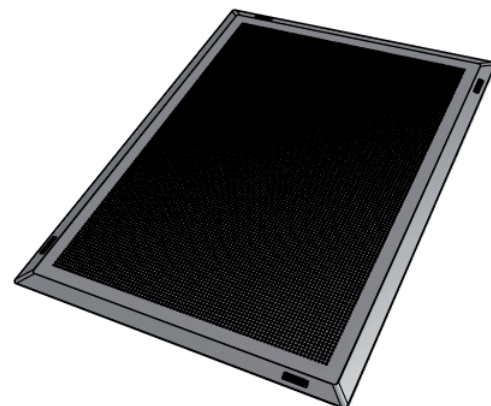
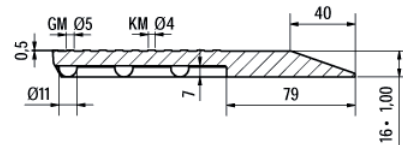
- ERGOLASTEC fire is flame-retardant according to specification EN13501-1 and therefore applicable at public buildings
- The approved flame protection system permits the use at welding workstations (MIG, MAG and WIG) without any troubles
- Bevelled outside edges for reduced risk of stumbling
- Very firm and sturdy making it suitable as a base when using transportation equipment
- This mat is due to the choce of high quality material comperatively odour less and therefore good applicable at indoor- areas
- Cleaning of mat and floor facilitated by simple removal of mat

ergolastec fire_wet



Mat with bubble-top for damp workstations

ergolastec fire_dry



Mat with flat structure for dry workstations