

ergolastec clean

THE HYGIENIC MAT



ergolastec clean

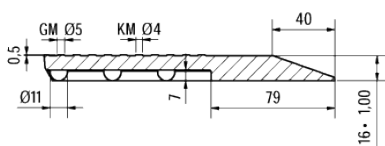
THE HYGIENIC MAT

basic data	clean_dry	clean_wet	clean_drain
Upper surface	flat structure	bubble-top	bubble-top with drains
Bottom side	dämping hemisphere	dämping hemisphere	dämping hemisphere
Outer edge	20° bevelled	20° bevelled	20° bevelled
Lenght/width/thickness	1350 x 1000 x 16 mm*	1350 x 1000 x 19 mm*	1350 x 1000 x 19 mm*
Weight	19 ± 1 kg	19,5 ± 1 kg	18 ± 1 kg
Hardness	63 ± 4 Shore A	63 ± 4 Shore A	63 ± 4 Shore A
Temperatur resistance	- 35°C to + 95°C	- 35°C to + 95°C	- 35°C to + 95°C
Interlocking designs	Typ A to K	Typ A to K	Typ A to K
Material	EPDM	EPDM	EPDM
Colour	grey	grey	grey
Tear resistance	≥ 6 MPa	≥ 6 MPa	≥ 6 MPa
Elongation at break	≥ 500 %	≥ 500 %	≥ 500 %
Density	1,2 ± 0,2 g/cm³	1,2 ± 0,2 g/cm³	1,2 ± 0,2 g/cm³
Fire protection certivikation	equivalent to Dfl	equivalent to Dfl	equivalent to Dfl
Biocide properties	resistant to fungus and bacteria		

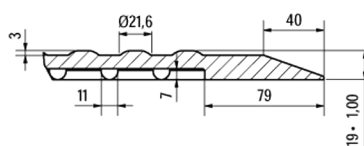
*Tolerances according to DIN ISO 3302-1M4;

- Its biocidal finish makes it particularly suitable for use in hygiene-sensitive areas such as canteen kitchens, butcher's shops and abattoirs
- ERGOLASTEC clean provides high skid-resistant even on soiled surfaces
- Bevelled outside edges for reduced risk of stumbling
- Mat stays in place on the floor, its own weight preventing it from slipping when laid loosely in isolation
- Very firm and sturdy making it suitable as a base when using transportation equipment
- Available in attractive grey tone
- ERGOLASTEC clean is made of biocidal rubber-compound according to the hygenic specifications and prevent from bacterium- and fungal-formation
- This mat is due to the choce of high quality material comperatively odour less and therefore good applicable at indoor- areas
- Cleaning of mat and floor facilitated by simple removal of mat

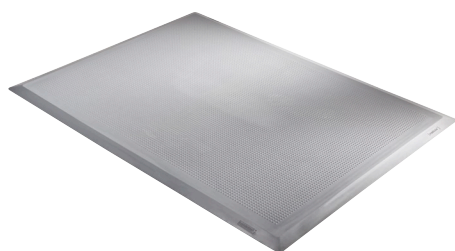
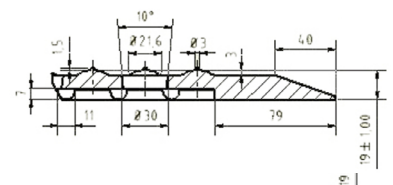
ergolastec clean_dry



ergolastec clean_wet



ergolastec clean_drain



Mat with flat structure for dry workstations

Mat with bubble-top for damp workstations

Mat with bubble-top and drains for wet workstations